

Queensland Mining Industry
Health & Safety Conference 2003
Innovation Awards

**Minsup 1" Isolation
Lockout Device**

Bob Browne

A member of the Rio Tinto Group



The Problem

- Kestrel introduced an isolation policy that mandated the use of locks when isolating plant and equipment on site.
- It was identified that the one-inch valves could not be positively isolated via lockout.
- Kestrel had approximately 500 one-inch minsup econovalves throughout the air and water reticulation system on site

A member of the Rio Tinto Group

Queensland Mining Industry Health & Safety Conference 2003

2

The Process Steps

- Preliminary rough sketch designed
- Consultation with on site local engineering company to make a prototype
- Manufacturer (Dixon Minsup) given the prototype and asked to supply Kestrel with the device that could be retro fitted to our existing valves

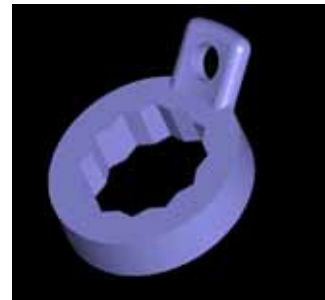
A member of the Rio Tinto Group

Queensland Mining Industry Health & Safety Conference 2003

3



The Solution



A member of the Rio Tinto Group

Queensland Mining Industry Health & Safety Conference 2003

4



The Solution

- This engineering modification allowed us to retro-fit without removal of existing valves from service.
- The modification allows two holes to line up when the valve is in the closed position.
- Locks can now be applied to the valve whilst in the closed position providing positive isolation.

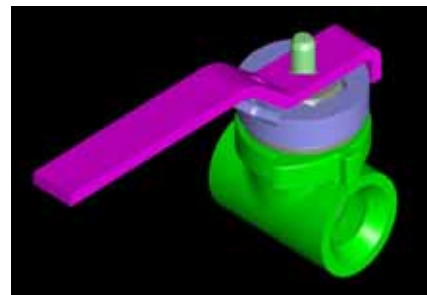
A member of the Rio Tinto Group

Queensland Mining Industry Health & Safety Conference 2003

5



The Solution



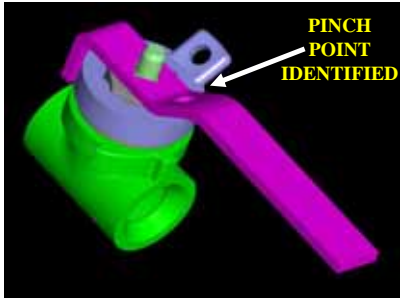
A member of the Rio Tinto Group

Queensland Mining Industry Health & Safety Conference 2003

6



Modifications



Queensland Mining Industry Health & Safety Conference 2003

7

A member of the Rio Tinto Group

Modifications



Queensland Mining Industry Health & Safety Conference 2003

8

A member of the Rio Tinto Group

Modifications



Queensland Mining Industry Health & Safety Conference 2003

9

A member of the Rio Tinto Group

The Benefits

- The one-inch valves can now be positively isolated via lockout.



Queensland Mining Industry Health & Safety Conference 2003

10

A member of the Rio Tinto Group

Costs

- Extremely cost effective as it allows modification to existing valves.
- It is a “one-off” expense.
- \$17 per valve.

Transferability

- Applicable in all industries using one-inch water and air lines with Minsup econovalves.

Queensland Mining Industry Health & Safety Conference 2003

11

A member of the Rio Tinto Group

Application



Queensland Mining Industry Health & Safety Conference 2003

12

A member of the Rio Tinto Group



Questions?

*Thank you for your
attention during this
presentation.*